

Inductors

For Power Line SMD

VLF Series VLF5014A Type

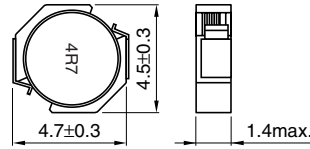
FEATURES

- Miniature size
Mount area: 4.5×4.7mm
Low profile: 1.4mm max. height
- Generic use for portable DC to DC converter line
- High magnetic shield construction should actualize high resolution for EMC protection.
- Available for automatic mounting in tape and reel package.
- The products do not contain lead and support lead-free soldering.

APPLICATIONS

DVCs, DSCs, PDAs, MDs, LCD displays,
Cellular phones, cordless telephones, HDDs, FDDs, etc.

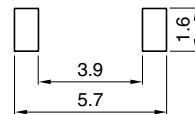
SHAPES AND DIMENSIONS



Dimensions in mm



RECOMMENDED PC BOARD PATTERN



Dimensions in mm

ELECTRICAL CHARACTERISTICS

Part No.	Inductance (μH)	Inductance tolerance(%)	Test frequency (kHz)	DC resistance(Ω)		Rated current(A)*	
				max.	typ.	Based on inductance change max.	Based on temperature rise typ.
VLF5014AT-4R7M1R1	4.7	±20	100	0.13	0.12	1.7	1.1
VLF5014AT-6R8MR99	6.8	±20	100	0.19	0.16	1.4	0.99
VLF5014AT-100MR92	10	±20	100	0.22	0.19	1.1	0.92
VLF5014AT-150MR76	15	±20	100	0.32	0.28	0.97	0.8

* Rated current: Value obtained when current flows and the temperature has risen to 40°C or when DC current flows and the nominal value of inductance has fallen by 30%, whichever is smaller.

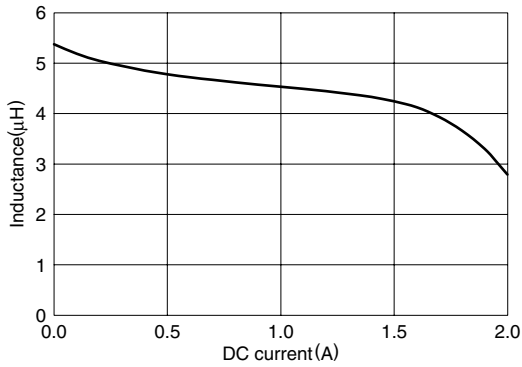
- Operating temperature range: -40 to +105°C (Including self-temperature rise)

Inductors

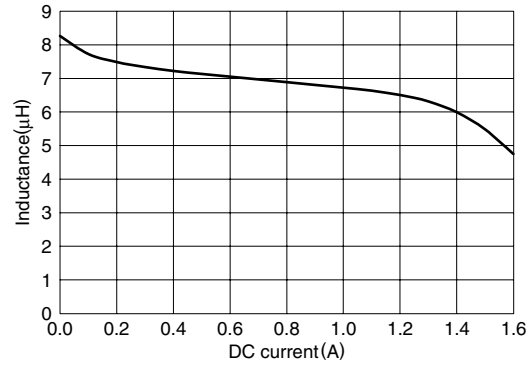
For Power Line
SMD

VLF Series VLF5014A Type

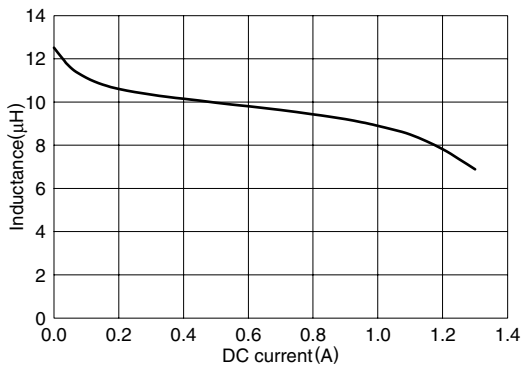
TYPICAL ELECTRICAL CHARACTERISTICS INDUCTANCE vs. DC SUPERPOSITION CHARACTERISTICS VLF5014AT-4R7M1R1



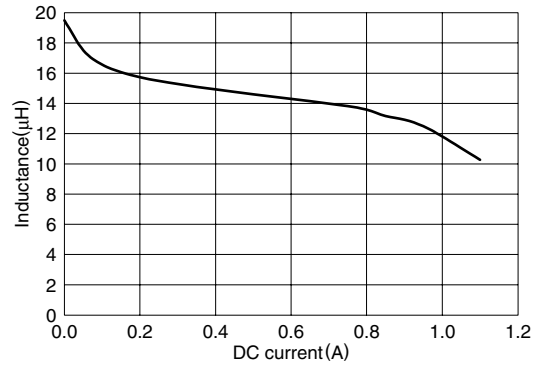
VLF5014AT-6R8MR99



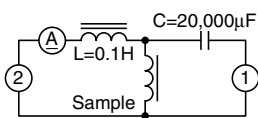
VLF5014AT-100MR92



VLF5014AT-150MR76



TEST CIRCUIT



- 1: LCR meter 4285A=100kHz
- 2: DC constant current